

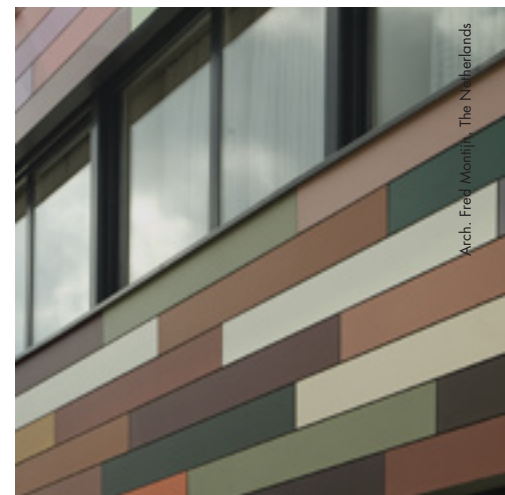


## ENVIRONMENTALLY SOUND PRODUCTS

**Trespa has developed a method for converting paper into an attractive, durable, moisture resistant and low maintenance material. Simply by applying heat, resin and pressure.**

The important environmental characteristics of Trespa's products are:

- > Trespa's facade system allows for expanded insulation and therefore lower energy costs.
- > Meeon is durable and long lasting, allowing the need for fewer products over the life of the building.
- > Meeon can be affixed on existing walls, allowing the builder the freedom to redesign the building without demolition.
- > Waste of Trespa material can be removed easily: it can be recycled, thermally recycled in a common industrial incinerator with high energy recovery and also landfill is possible. All in accordance with national or local disposal regulations.
- > Meeon can contribute to US Green Building Council LEED® credits.



[www.trespa.com](http://www.trespa.com)

# THE ENVIRONMENTAL PERFORMANCE OF TRESPA IN A BUILDING

## Maintenance, cleaning and flexibility

- > Easy to clean, little maintenance required
- > No rot, no decay
- > Demountable
- > Easy to modify
- > No need for sealants, few joints
- > No painting required

## Life span of buildings

- > Old buildings can be upgraded or renovated (aesthetically and/or with extra insulation) with little impact on the construction or foundation. The inner shell can be protected against aging by overcladding with Trespa materials.
- > Trespa is durable.
- > Rain screen cladding protects the inner shells of the building from water damage and deterioration.
- > New panels in the original color can be ordered in most cases, even after several years.

## Life span of used materials

Trespa panels have an extensive life span. No painting is required, only annual cleaning with mild cleaning agents, such as water and detergents. Graffiti is easy to remove with more severe water-based cleaning agents, without impact on the quality or performance of the product. Meteon is termite resistant and is not affected by microorganisms. The panel properties withstand moisture and freeze-thaw cycles and will not decay.

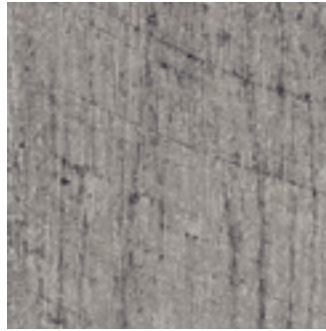


### **Whole life costing of the building**

In most cases, especially in demanding interior applications and in exterior applications, Trespa offers solutions with low operational costs and better whole life costs. Costs for maintenance are low. Trespa Meteon is resistant to many kinds of abuse.

### **Construction and demolition waste**

- > Trespa waste is low in dust and debris.
- > Trespa waste is relatively lightweight, compact and easy to transport.
- > In case of landfill, no danger for pollution of air or ground water possible.







## CERTIFICATE OF APPROVAL

This is to certify that the Environmental Management System of:

### **Trespa International B.V. Weert, The Netherlands**

has been approved by Lloyd's Register Quality Assurance  
to the following environmental management system standard:

**ISO 14001 : 2004**

The Environmental Management System is applicable to:

**Development and manufacture of Trespa® sheet material.**

Approval  
Certificate No: 658417

Original Approval: 21 January 2004

Current Certificate: 8 February 2007

Certificate Expiry: 31 January 2010

  
Issued by: LRQA (Rotterdam)



This document is subject to the provision on the reverse  
This approval is subject to the company maintaining its system to the required standards, which will be monitored by LRQA.  
maxio spocert rev 1